



Track-Dumper 3-side tipper

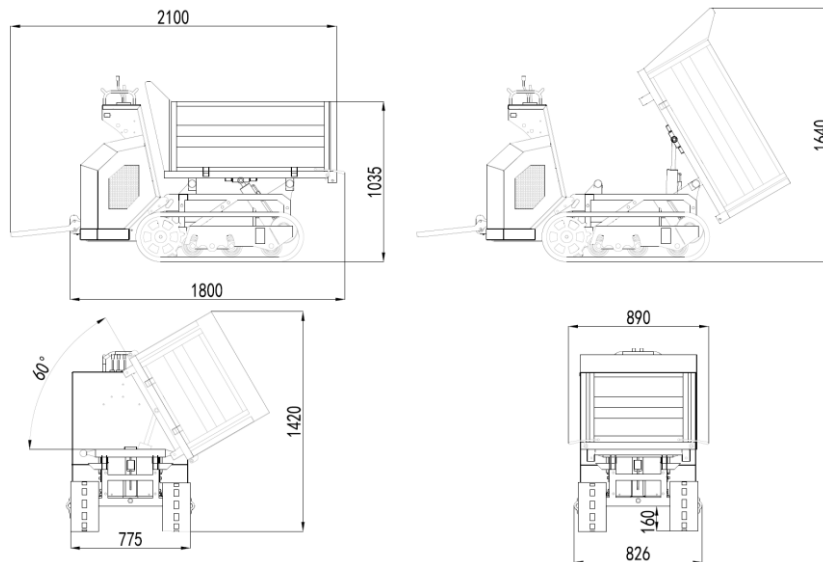


RC 1200-3SK



Track-Dumper RC 1200 – 3SK

Technical Data



Engine	
HONDA / Yanmar	GX390 / L100N6
Type	1 cyl. / 4-stroke
Displacement	422 cm ³
Engine output	8,2 kW (11,0 HP) / 7,4 kW (10,6 HP)
Revolution speed	3600/rpm
Starter	reversing + electric starter
Air filter	dry cell
Fuel filter	gauze



Drive	hydrostatic
Guidance	hydraulic motor
Characteristic	hydraulic tipping device hydraulic three-way tipper electric start



operating data	
weight	600 kg
max. payload	1200 kg
max. weight (loaded)	1600 kg
tipping device	hydraulic
climbing ability	max. 26° (50%)
working speed	0 – 4,8 km/h
oil pressure	160 bar
flow rate oil pump	36 ltr./min.



Baumaschinen GmbH

Niederhöchstädter Str. 71-73 D-61476 Kronberg
 Tel.: 0049-(0)6173-68558 Fax: 0049-(0)6173-68548
 E-Mail: info@powerpac.de Internet: www.powerpac.de